

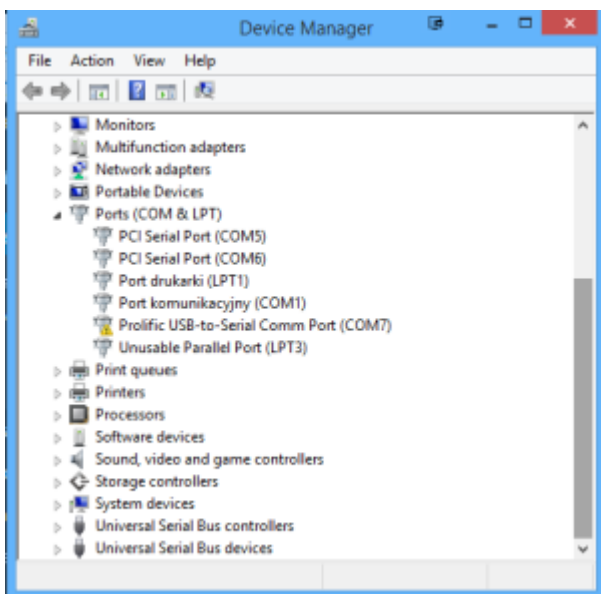
# Fake PL2303 – how to install on Windows 8.1

I recently bought two USB-to-UART converters with Prolific PL2303 chip inside. I found them on [Aliexpress](https://www.aliexpress.com) in a really good price (0.89\$ each).

After waiting 3 weeks, they finally arrived.



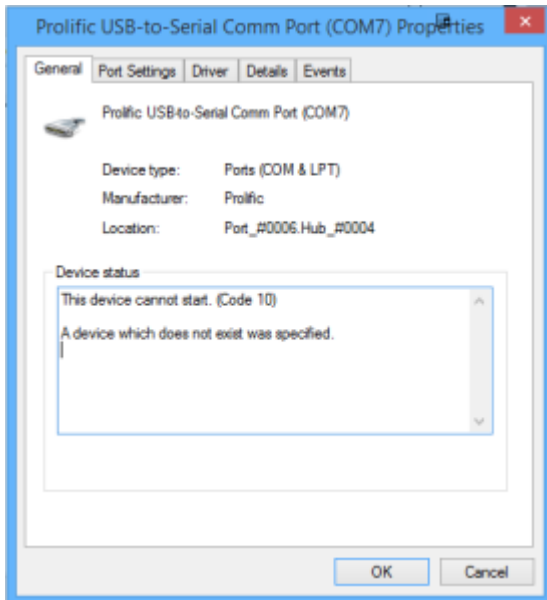
But unfortunately I didn't read enough about converters with these chips before buying. As it turned out converters are recognized in Windows 8.1 as Prolific-to-Serial Comm Port but marked with yellow warning sign.



Putty is constatly giving an error „Unable to open connection” . In addition in the device propperties I found an error

1This device cannot start. (Code 10)

2A device which does not exist was specified.



Error code 10.

A quick investigation gave an unpleasant answer – PL2303 chips are fake!

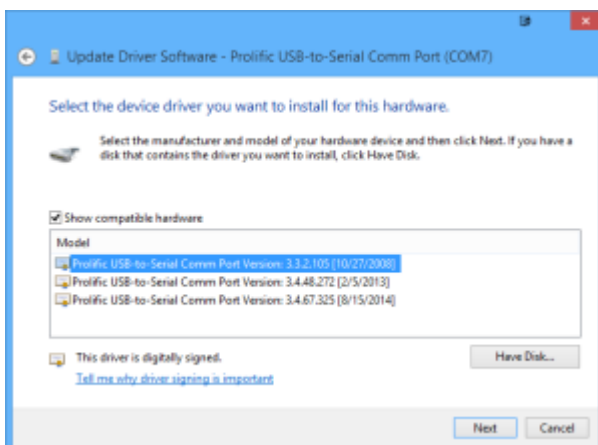
In the newest drivers Prolific blocked all fake chips and the driver in Windows 8.1 is also blocking my fake pl2303.

But there is a solution – you have to install old drivers – version 3.3.2.105.

[IO-Cable PL-2303 Drivers-Generic Windows PL2303 Prolific](#)

Simply install drivers, then go to **Device Manager** -> Right click on **Prolific-to-Serial Comm Port** and select **Update Driver Software...**

In **Update Driver Software** window chose: **Browse my computer for driver software** -> **Let me pick from list of devices on my computer**, Select **Prolific USB-to\_Serial Comm Port version 3.3.2.105 model [10/27/2008]** from model list and click next.



USB-to-Serial Comm Port Driver.

The driver will install and your fake pl2303 Prolific converter will be ready to use ;)